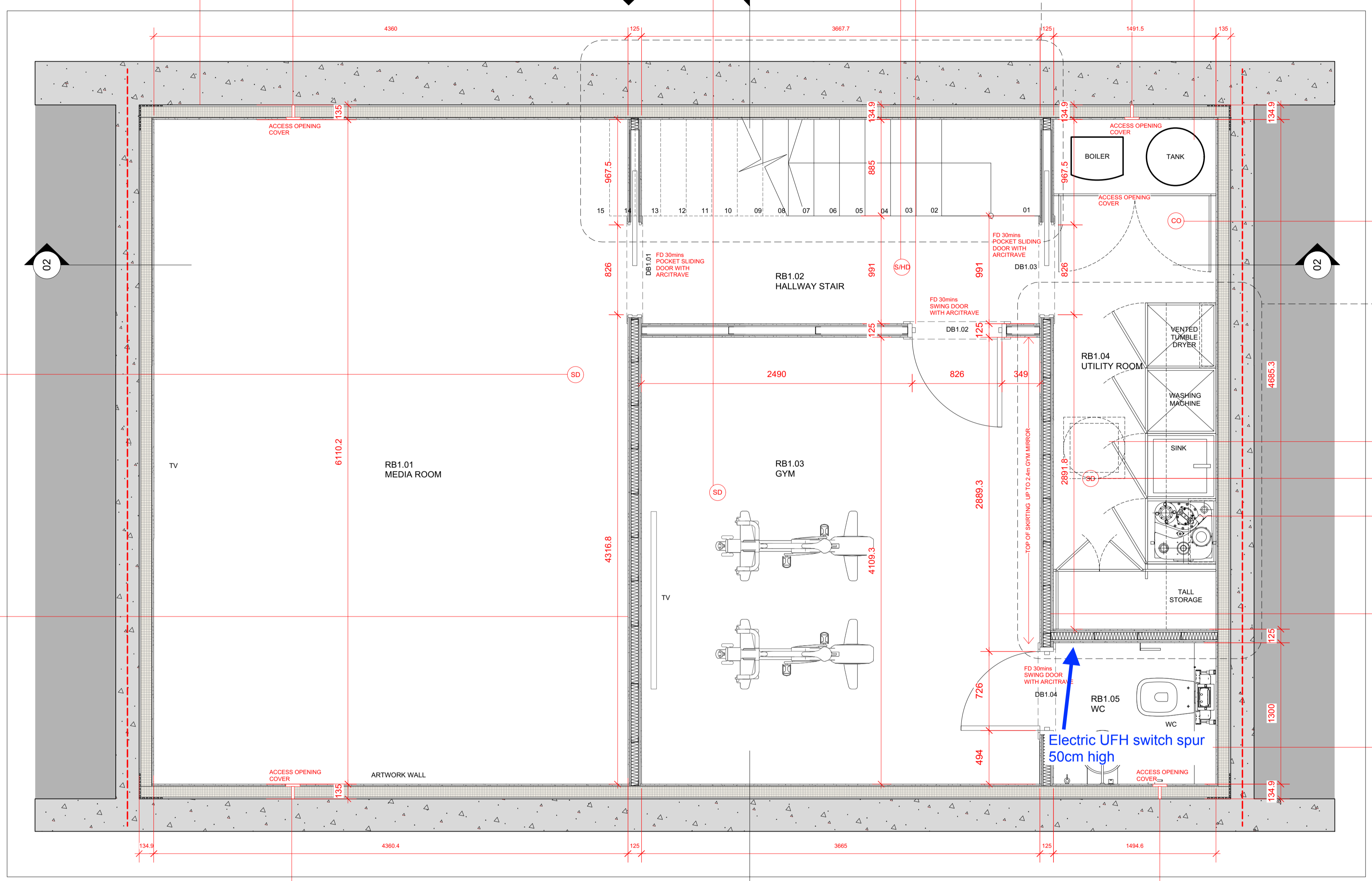


WALL BUILD-UP:
 Moisture resistant tapered edges plaster board / Eternit Hydropanel/ Fermacell - Apply three strips of PC856 adhesive using 10 mm notched trowel
 FOAMGLAS® T4+ (minimum 70mm) with joints sealed with PC856 bituminous adhesive
 Delta-MS500 drainage membrane
 Koster Polysil TG500 Anti-Lime Coating
 Reinforced concrete, please consult structural engineers drawings for more detail



BATTERY OPERATED FIRE SMOKE / HEAT ALARM

3MM SKIM
 12.5 SOUND BLOC
 15MM FIREBOARD
 70MM ACOUSTIC STUDS WITH 25MM ISOVER
 15MM FIREBOARD
 12.5 SOUND BLOC
 3MM SKIM

1 PROPOSED SETTING OUT - B1
 Scale: 1:25



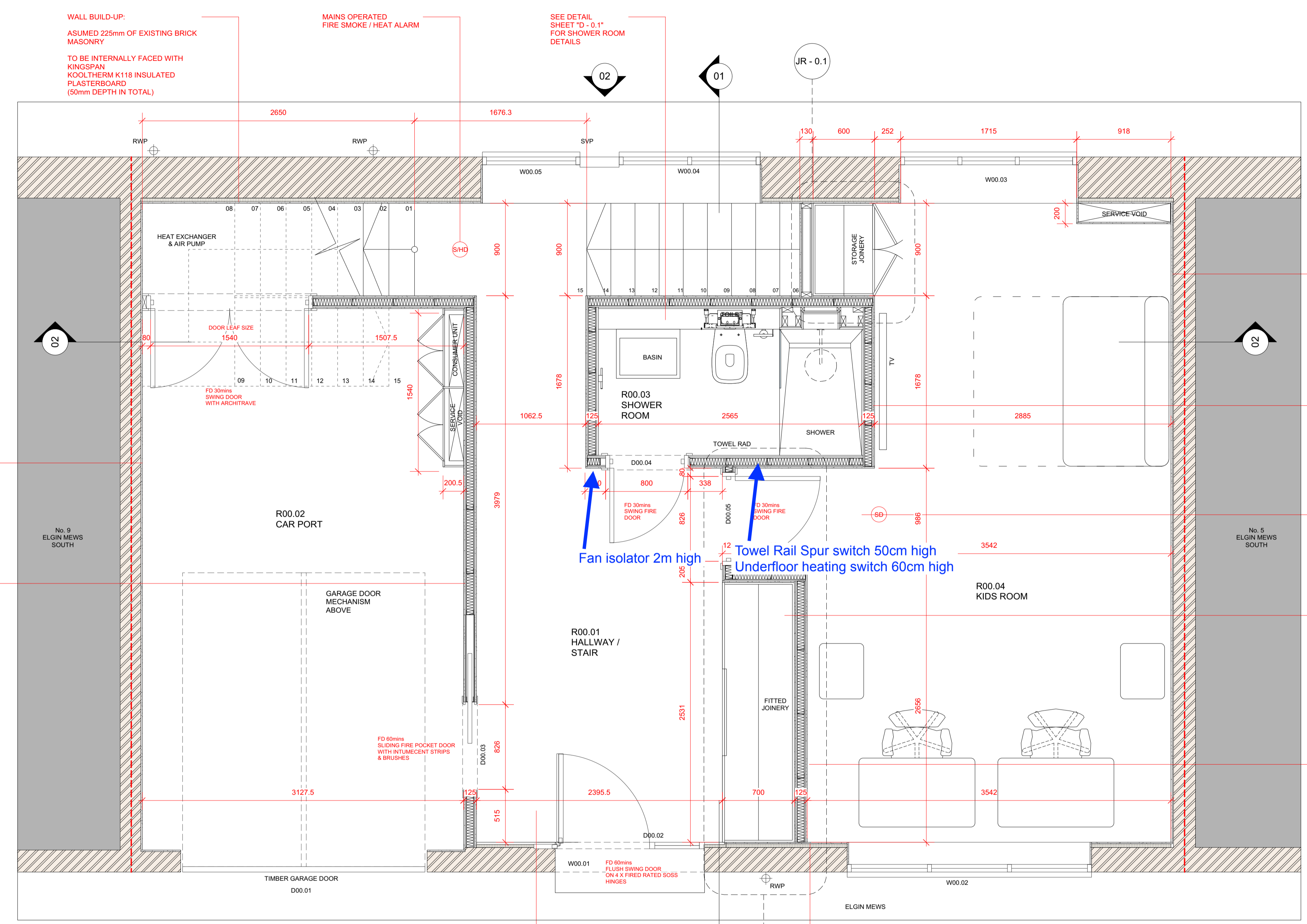
| COMMUNICATIONS / DATA SOCKET | | SWITCHED FUSED SPUR | | DOOR RELEASE / INTERCOM | | EXTERNAL SIREN | | SMOKE / HEAT DETECTOR | | LOW VOLTAGE DOWNLIGHTER | | LIGHT SWITCH | |
|------------------------------|--------------------------------------|---------------------|------------------|-------------------------|--------------------------|-------------------------------------|---------------------------|-----------------------|--------------------------|-------------------------------------|---------------------------|-----------------------|--------------------------|
| BT PHONE LINE CONNECTION | SINGLE SWITCHED SOCKET | DOORBELL PUSH | DOORBELL SOUNDER | INTERNAL SIREN | SMOKE DETECTOR | LOW VOLTAGE DIRECTIONAL DOWNLIGHTER | PUSH/TURN DIMMER SWITCH | SMOKE / HEAT DETECTOR | SMOKE DETECTOR | LOW VOLTAGE DIRECTIONAL DOWNLIGHTER | PUSH/TURN DIMMER SWITCH | SMOKE / HEAT DETECTOR | SMOKE DETECTOR |
| SKY PLUS TV CONNECTION | TWIN SWITCHED SOCKET | DOORBELL SOUNDER | DOORBELL SOUNDER | INTERNAL SIREN | HEAT DETECTOR | PENDANT LAMP | PULL CORD | SMOKE DETECTOR | HEAT DETECTOR | PENDANT LAMP | PULL CORD | SMOKE / HEAT DETECTOR | HEAT DETECTOR |
| VIRGIN TV CONNECTION | TWIN SWITCHED SOCKET WITH USB | DOORBELL SOUNDER | DOORBELL SOUNDER | INTERNAL SIREN | CARBON MONOXIDE DETECTOR | STRIPLIGHT | ROOFLIGHT OPENER | SMOKE DETECTOR | CARBON MONOXIDE DETECTOR | STRIPLIGHT | ROOFLIGHT OPENER | SMOKE / HEAT DETECTOR | CARBON MONOXIDE DETECTOR |
| TV AERIAL | SHAVER SOCKET | DOORBELL SOUNDER | DOORBELL SOUNDER | INTERNAL SIREN | BREAK GLASS ALARM | WALL LAMP | THERMOSTAT (W + WIRELESS) | SMOKE / HEAT DETECTOR | BREAK GLASS ALARM | WALL LAMP | THERMOSTAT (W + WIRELESS) | SMOKE / HEAT DETECTOR | BREAK GLASS ALARM |
| | TWIN SWITCHED OUTDOOR SOCKET - IP 66 | DOORBELL SOUNDER | DOORBELL SOUNDER | INTERNAL SIREN | | EMERGENCY LIGHTING | EXTRACTOR FAN | SMOKE / HEAT DETECTOR | | EMERGENCY LIGHTING | EXTRACTOR FAN | SMOKE / HEAT DETECTOR | |
| | | DOORBELL SOUNDER | DOORBELL SOUNDER | INTERNAL SIREN | | ILLUMINATED FIRE EXIT SIGN | SPEAKER | SMOKE / HEAT DETECTOR | | ILLUMINATED FIRE EXIT SIGN | SPEAKER | SMOKE / HEAT DETECTOR | |

DRAWING NOTES
 XAMI TO SHALL HAVE NO RESPONSIBILITY FOR ANY USE MADE OF THIS DOCUMENT OTHER THAN THAT FOR WHICH IT WAS PREPARED AND ISSUED. ALL DIMENSIONS SHOULD BE CHECKED ON SITE. DO NOT SCALE FROM THIS DRAWING. ANY DRAWING ERRORS OR DIVERGENCES SHOULD BE BROUGHT TO THE ATTENTION OF XAMI LTD IMMEDIATELY.
 ALL DETAILS INCLUDING EARTH CONDITIONS, STRUCTURE, GLAZING, GROUND AND OVERHEAD WATERPROOFING, MIE SERVICES AND FINISHES ARE SHOWN FOR INDICATIVE PURPOSES ONLY AND ARE SUBJECT TO CONTRACTOR'S OWN SURVEY, DESIGN AND STATUTORY APPROVALS (INCLUDING BUT NOT LIMITED TO BUILDING CONTROL, PARTY WALLS AND WATER BOARD) PRIOR TO COMMENCING WORK. NO CHECKS HAVE BEEN MADE ON RESTRICTIVE COVENANTS; RESPONSIBILITY FOR OBTAINING ALL APPROVALS WILL BE BORNE BY THE CONTRACTOR.
 REFER TO STRUCTURAL ENGINEER'S SPECIFICATION AND DRAWINGS FOR ALL STRUCTURAL WORKS.
 ALL TEMPORARY STRUCTURAL AND WEATHERPROOFING WORKS ARE THE RESPONSIBILITY OF THE CONTRACTOR.



| No. | Date | Issue Notes |
|-----|----------------|---|
| A | 10 / 03 / 2020 | REVISIONS TO JOINERY / ELECTRICS / LIGHTING / SETTING-OUT |

| | |
|---------------------------------|---------------------------|
| STATUS: FOR CONSTRUCTION | |
| Project Title | 7 ELGIN MEWS SOUTH |
| Sheet Title | PROPOSED SETTING OUT - B1 |
| Project ID | 1908 |
| Scale | 1:25@A1 |
| Sheet No. | (00)11 |
| Date | 10 / 03 / 2020 |



WALL BUILD-UP:
 ASUMED 225mm OF EXISTING BRICK MASONRY
 TO BE INTERNALLY FACED WITH KINGSPAN KOOL THERM K118 INSULATED PLASTERBOARD (50mm DEPTH IN TOTAL)

TO PARTY WALLS:
 3MM SKIM
 12.5 SOUND BLOC
 ASSUMED 225MM BRICK MASONRY PARTY WALL

3MM SKIM
 12.5 SOUND BLOC
 15MM FIREBOARD
 70MM ACOUSTIC STUDS WITH 25MM ISOVER
 15MM FIREBOARD
 12.5 SOUND BLOC
 3MM SKIM
 1 HOUR FIRE RESISTANCE

TO PARTY WALLS:
 3MM SKIM
 12.5 SOUND BLOC
 ASSUMED 225MM BRICK MASONRY PARTY WALL

3MM SKIM
 12.5 SOUND BLOC
 15MM FIREBOARD
 70MM ACOUSTIC STUDS WITH 25MM ISOVER
 15MM FIREBOARD
 12.5 SOUND BLOC
 3MM SKIM
 OR
 PORCELAIN TILE

BATTERY OPERATED FIRE SMOKE / HEAT ALARM

BATTERY OPERATED FIRE SMOKE / HEAT ALARM

3MM SKIM
 12.5 SOUND BLOC
 15MM FIREBOARD
 70MM ACOUSTIC STUDS WITH 25MM ISOVER
 15MM FIREBOARD
 12.5 SOUND BLOC
 3MM SKIM (ABOVE 2.4M DATUM)
 OR
 18mm ROUTED MDF DECORATIVE PANELS FLUSH WITH DOORS (BELOW 2.4M DATUM)

1 PROPOSED SETTING OUT - L00
 Scale: 1:25

SEE DETAIL SHEET 'D - 0.2' FOR HALLWAY WALL PANNELLING & DOOR DETAILS

WALL BUILD-UP:
 ASUMED 225mm OF EXISTING BRICK MASONRY
 TO BE INTERNALLY FACED WITH KINGSPAN KOOL THERM K118 INSULATED PLASTERBOARD (50mm DEPTH IN TOTAL)



| ELECTRICAL & LIGHTING KEY | | | | | | | | | | | | | |
|------------------------------|----------------------|-------------------------|------------------------------|-----------------------|----------------------------|---------------------------|--------------------------|--------------------------------------|------------------|----------------------------|--------------------------|-------------------------------------|------------------------|
| COMMUNICATIONS / DATA SOCKET | SWITCHED FUSED SPUR | DOOR RELEASE / INTERCOM | EXTERNAL SIREN | SMOKE / HEAT DETECTOR | LOW VOLTAGE DOWNLIGHTER | LIGHT SWITCH | BT PHONE LINE CONNECTION | SINGLE SWITCHED SOCKET | DOORBELL PUSH | INTERNAL SIREN | SMOKE DETECTOR | LOW VOLTAGE DIRECTIONAL DOWNLIGHTER | PUSHTURN DIMMER SWITCH |
| SKY PLUS TV CONNECTION | TWIN SWITCHED SOCKET | DOORBELL SOUNDER | MAIN SECURITY ALARM PANEL | HEAT DETECTOR | PENDANT LAMP | PULL CORD | VIRGIN TV CONNECTION | TWIN SWITCHED SOCKET WITH USB | DOORBELL SOUNDER | SECURITY ALARM KEYPAD | CARBON MONOXIDE DETECTOR | STRIPLIGHT | ROOFLIGHT OPENER |
| TV AERIAL | SHAVER SOCKET | | SECURITY ALARM MOTION SENSOR | BREAK GLASS ALARM | WALL LAMP | THERMOSTAT (W = WIRELESS) | | TWIN SWITCHED OUTDOOR SOCKET - IP 66 | | SECURITY ALARM DOOR SENSOR | | EMERGENCY LIGHTING | EXTRACTOR FAN |
| | | | | | ILLUMINATED FIRE EXIT SIGN | SPEAKER | | | | | | | |

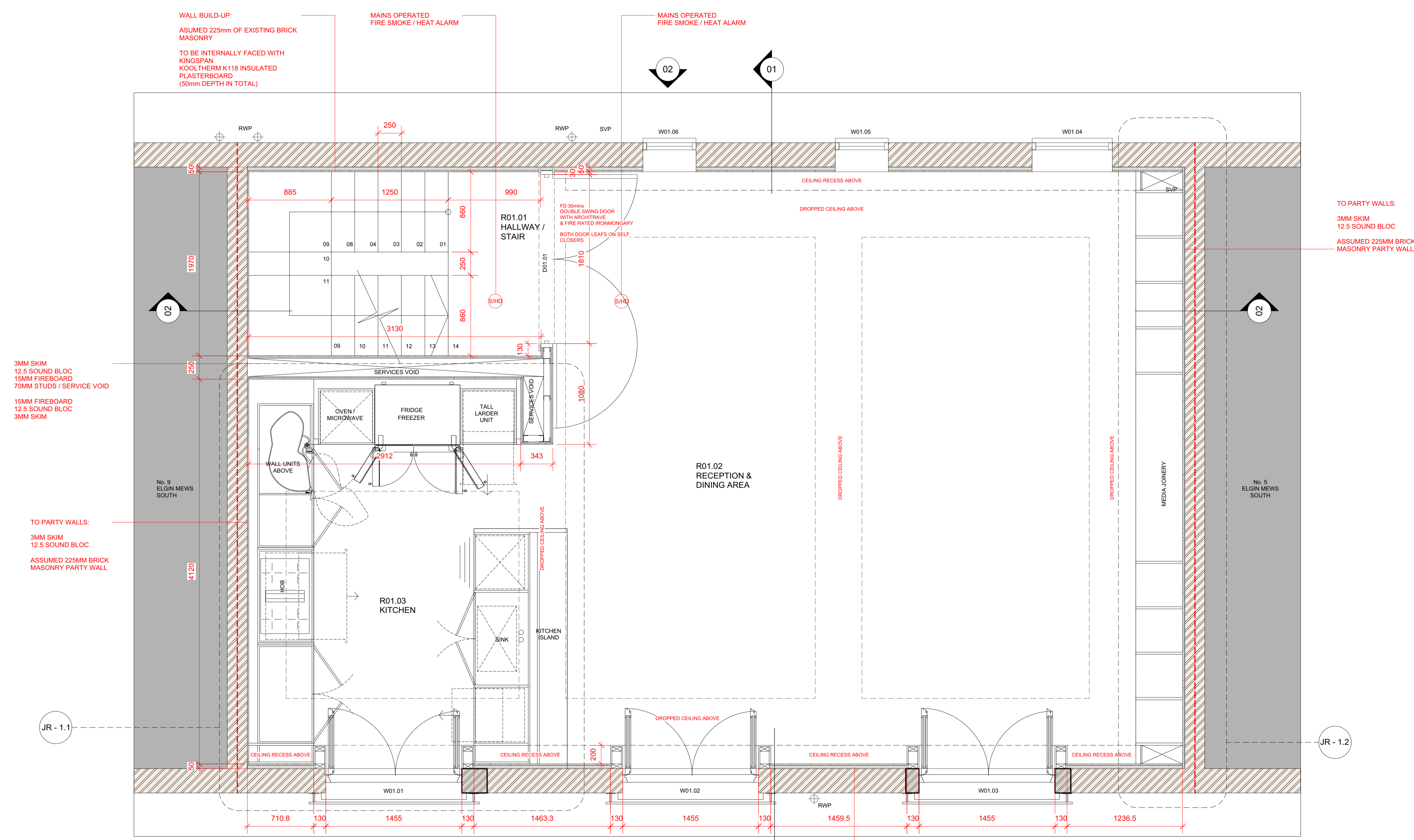
DRAWING NOTES
 XAMI TO SHALL HAVE NO RESPONSIBILITY FOR ANY USE MADE OF THIS DOCUMENT OTHER THAN THAT FOR WHICH IT WAS PREPARED AND ISSUED. ALL DIMENSIONS SHOULD BE CHECKED ON SITE. DO NOT SCALE FROM THIS DRAWING. ANY DRAWING ERRORS OR DIVERGENCES SHOULD BE BROUGHT TO THE ATTENTION OF XAMI LTD IMMEDIATELY.
 ALL DETAILS INCLUDING EARTH CONDITIONS, STRUCTURE, GLAZING, GROUND AND OVERHEAD WATERPROOFING, M&E SERVICES AND FINISHES ARE SHOWN FOR INDICATIVE PURPOSES ONLY AND ARE SUBJECT TO CONTRACTOR'S OWN SURVEY, DESIGN AND STATUTORY APPROVALS (INCLUDING BUT NOT LIMITED TO BUILDING CONTROL, PARTY WALLS AND WATER BOARD) PRIOR TO COMMENCING WORK. NO CHECKS HAVE BEEN MADE ON RESTRICTIVE COVENANTS, RESPONSIBILITY FOR OBTAINING ALL APPROVALS WILL BE BORNE BY THE CONTRACTOR.
 REFER TO STRUCTURAL ENGINEER'S SPECIFICATION AND DRAWINGS FOR ALL STRUCTURAL WORKS.
 ALL TEMPORARY STRUCTURAL AND WEATHERPROOFING WORKS ARE THE RESPONSIBILITY OF THE CONTRACTOR.



B@XAMI.CO.UK
 TEL: +44 (0)20 3907 6874

© 2019 XAMI

| STATUS: FOR CONSTRUCTION | | |
|--------------------------|----------------------------|---|
| Project Title | 7 ELGIN MEWS SOUTH | |
| Sheet Title | PROPOSED SETTING OUT - L00 | |
| Project ID | 1908 | |
| Scale | 1:25@A1 | |
| Sheet No. | (00)12 | |
| Date | 10 / 03 / 2020 | |
| No. | Date | Issue Notes |
| A | 10 / 03 / 2020 | REVISIONS TO JOINERY / ELECTRICS / LIGHTING / SETTING-OUT |



1 PROPOSED SETTING OUT - L01
Scale: 1:25



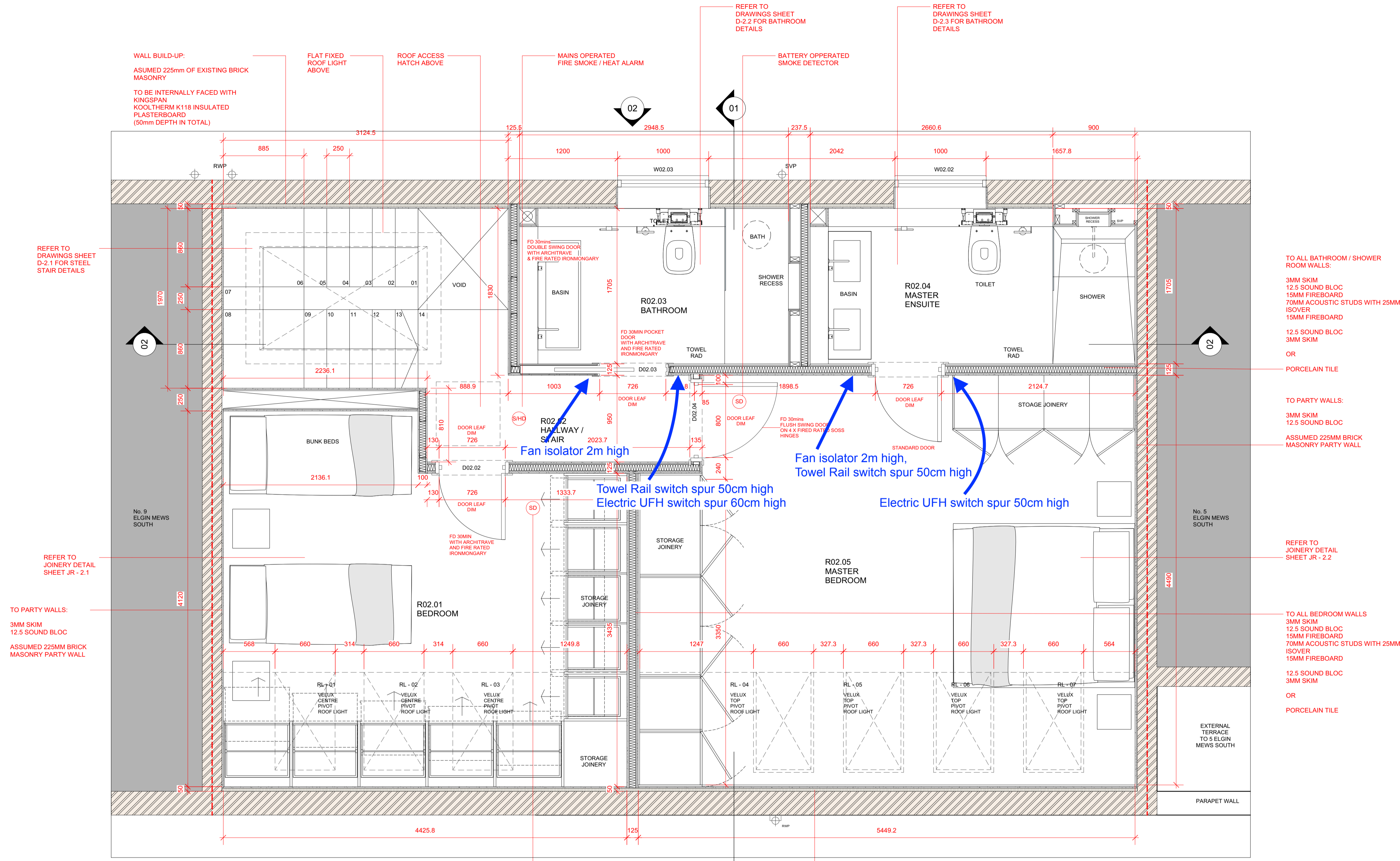
| ELECTRICAL & LIGHTING KEY | | | | | | | | | | | | | |
|------------------------------|----------|--------------------------------------|-----------|-------------------------|--------|------------------------------|---------|--------------------------|-------|-------------------------------------|-------|---------------------------|-------|
| COMMUNICATIONS / DATA SOCKET | [DATA] | SWITCHED FUSED SPUR | [SWITCH] | DOOR RELEASE / INTERCOM | [DOOR] | EXTERNAL SIREN | [SIREN] | SMOKE / HEAT DETECTOR | [SHD] | LOW VOLTAGE DOWNLIGHTER | [DL] | LIGHT SWITCH | [SW] |
| BT PHONE LINE CONNECTION | [BT] | SINGLE SWITCHED SOCKET | [SS] | DOORBELL PUSH | [DBP] | INTERNAL SIREN | [IS] | SMOKE DETECTOR | [SD] | LOW VOLTAGE DIRECTIONAL DOWNLIGHTER | [DL] | PUSH/TURN DIMMER SWITCH | [PDS] |
| SKY PLUS TV CONNECTION | [SKY] | TWIN SWITCHED SOCKET | [TSS] | DOORBELL SOUNDER | [DBS] | MAIN SECURITY ALARM PANEL | [MAP] | HEAT DETECTOR | [HD] | PENDANT LAMP | [PL] | PULL CORD | [PC] |
| VIRGIN TV CONNECTION | [VIRGIN] | TWIN SWITCHED SOCKET WITH USB | [TSS+USB] | | | SECURITY ALARM KEYPAD | [AP] | CARBON MONOXIDE DETECTOR | [CO] | STRIPLIGHT | [SL] | ROOFLIGHT OPENER | [RO] |
| TV AERIAL | [TV] | SHAVER SOCKET | [SSH] | | | SECURITY ALARM MOTION SENSOR | [MS] | BREAK GLASS ALARM | [BGA] | WALL LAMP | [WL] | THERMOSTAT (W + WIRELESS) | [T] |
| | | TWIN SWITCHED OUTDOOR SOCKET - IP 66 | [TSS+O] | | | SECURITY ALARM DOOR SENSOR | [DS] | | | EMERGENCY LIGHTING | [EL] | EXTRACTOR FAN | [EF] |
| | | | | | | | | | | ILLUMINATED FIRE EXIT SIGN | [FES] | SPEAKER | [S] |

DRAWING NOTES
 XAMI LTD SHALL HAVE NO RESPONSIBILITY FOR ANY USE MADE OF THIS DOCUMENT OTHER THAN THAT FOR WHICH IT WAS PREPARED AND ISSUED. ALL DIMENSIONS SHOULD BE CHECKED ON SITE. DO NOT SCALE FROM THIS DRAWING. ANY DRAWING ERRORS OR DIVERGENCES SHOULD BE BROUGHT TO THE ATTENTION OF XAMI LTD IMMEDIATELY.
 ALL DETAILS INCLUDING EARTH CONDITIONS, STRUCTURE, GLAZING, GROUND AND OVERHEAD WATERPROOFING, MISE SERVICES AND FINISHES ARE SHOWN FOR INDICATIVE PURPOSES ONLY AND ARE SUBJECT TO CONTRACTOR'S OWN SURVEY, DESIGN AND STATUTORY APPROVALS (INCLUDING BUT NOT LIMITED TO BUILDING CONTROL, PARTY WALLS AND WATER BOARD) PRIOR TO COMMENCING WORK. NO CHECKS HAVE BEEN MADE ON RESTRICTIVE COVENANTS. RESPONSIBILITY FOR OBTAINING ALL APPROVALS WILL BE BORNE BY THE CONTRACTOR.
 REFER TO STRUCTURAL ENGINEER'S SPECIFICATION AND DRAWINGS FOR ALL STRUCTURAL WORKS.
 ALL TEMPORARY STRUCTURAL AND WEATHERPROOFING WORKS ARE THE RESPONSIBILITY OF THE CONTRACTOR.

B@XAMI.CO.UK
TEL: +44 (0)20 3907 6874
© 2019 XAMI

| No. | Date | Issue Notes |
|-----|----------------|---|
| A | 11 / 03 / 2020 | CHANGE TO OVERALL DESIGN OF JOINERY & KITCHEN |

| STATUS: FOR CONSTRUCTION | |
|--------------------------|----------------------------|
| Project Title | 7 ELGIN MEWS SOUTH |
| Sheet Title | PROPOSED SETTING OUT - L01 |
| Project ID | 1908 |
| Scale | 1:25@A1 |
| Sheet No. | (00)13 |
| Date | 11 / 03 / 2020 |



1 PROPOSED SETTING OUT - L02
Scale: 1:25

WALL BUILD-UP:
ASUMED 225mm OF EXISTING BRICK MASONRY
TO BE INTERNALLY FACED WITH KINGSPAN KOOLTHERM K118 INSULATED PLASTERBOARD (50mm DEPTH IN TOTAL)

REFER TO DRAWINGS SHEET D-2.1 FOR STEEL STAIR DETAILS

REFER TO DRAWINGS SHEET D-2.2 FOR BATHROOM DETAILS

REFER TO DRAWINGS SHEET D-2.3 FOR BATHROOM DETAILS

REFER TO JOINERY DETAIL SHEET JR - 2.1

REFER TO JOINERY DETAIL SHEET JR - 2.2

TO PARTY WALLS:
3MM SKIM
12.5 SOUND BLOC
ASSUMED 225MM BRICK MASONRY PARTY WALL

TO ALL BATHROOM / SHOWER ROOM WALLS:
3MM SKIM
12.5 SOUND BLOC
15MM FIREBOARD
70MM ACOUSTIC STUDS WITH 25MM ISOVER
15MM FIREBOARD
12.5 SOUND BLOC
3MM SKIM
OR
PORCELAIN TILE

TO PARTY WALLS:
3MM SKIM
12.5 SOUND BLOC
ASSUMED 225MM BRICK MASONRY PARTY WALL

TO ALL BEDROOM WALLS
3MM SKIM
12.5 SOUND BLOC
15MM FIREBOARD
70MM ACOUSTIC STUDS WITH 25MM ISOVER
15MM FIREBOARD
12.5 SOUND BLOC
3MM SKIM
OR
PORCELAIN TILE

WALL BUILD-UP:
ASUMED 225mm OF EXISTING BRICK MASONRY
TO BE INTERNALLY FACED WITH KINGSPAN KOOLTHERM K118 INSULATED PLASTERBOARD (50mm DEPTH IN TOTAL)

BATTERY OPERATED SMOKE DETECTOR

BATTERY OPERATED SMOKE DETECTOR

BATTERY OPERATED SMOKE DETECTOR

Fan isolator 2m high

Towel Rail switch spur 50cm high
Electric UFH switch spur 60cm high

Fan isolator 2m high,
Towel Rail switch spur 50cm high
Electric UFH switch spur 50cm high



| ELECTRICAL & LIGHTING KEY | |
|------------------------------|--------------------------------------|
| COMMUNICATIONS / DATA SOCKET | SWITCHED FUSED SPUR |
| BT PHONE LINE CONNECTION | SINGLE SWITCHED SOCKET |
| SKY PLUS TV CONNECTION | TWIN SWITCHED SOCKET |
| VIRGIN TV CONNECTION | TWIN SWITCHED SOCKET WITH USB |
| TV AERIAL | SHAVER SOCKET |
| | TWIN SWITCHED OUTDOOR SOCKET - IP 66 |
| DOOR RELEASE / INTERCOM | DOOR BELL PUSH |
| DOOR BELL SOUNDER | DOOR BELL SOUNDER |
| EXTERNAL SIREN | INTERNAL SIREN |
| MAIN SECURITY ALARM PANEL | SECURITY ALARM KEYPAD |
| SECURITY ALARM MOTION SENSOR | SECURITY ALARM DOOR SENSOR |
| SMOKE / HEAT DETECTOR | SMOKE DETECTOR |
| HEAT DETECTOR | CARBON MONOXIDE DETECTOR |
| BREAK GLASS ALARM | |
| LOW VOLTAGE DOWNLIGHTER | LOW VOLTAGE DIRECTIONAL DOWNLIGHTER |
| PENDANT LAMP | STRIPLIGHT |
| WALL LAMP | EMERGENCY LIGHTING |
| ILLUMINATED FIRE EXIT SIGN | |
| LIGHT SWITCH | PUSH/TURN DIMMER SWITCH |
| PULL CORD | ROOFLIGHT OPENER |
| THERMOSTAT (W + WIRELESS) | EXTRACTOR FAN |
| SPEAKER | |

DRAWING NOTES

XAMI LTD SHALL HAVE NO RESPONSIBILITY FOR ANY USE MADE OF THIS DOCUMENT OTHER THAN THAT FOR WHICH IT WAS PREPARED AND ISSUED. ALL DIMENSIONS SHOULD BE CHECKED ON SITE. DO NOT SCALE FROM THIS DRAWING. ANY DRAWING ERRORS OR DIVERGENCES SHOULD BE BROUGHT TO THE ATTENTION OF XAMI LTD IMMEDIATELY.

ALL DETAILS INCLUDING EARTH CONDITIONS, STRUCTURE, GLAZING, GROUND AND OVERHEAD WATERPROOFING, MISE SERVICES AND FINISHES ARE SHOWN FOR INDICATIVE PURPOSES ONLY AND ARE SUBJECT TO CONTRACTOR'S OWN SURVEY, DESIGN AND STATUTORY APPROVALS (INCLUDING BUT NOT LIMITED TO BUILDING CONTROL, PARTY WALLS AND WATER BOARD) PRIOR TO COMMENCING WORK. NO CHECKS HAVE BEEN MADE ON RESTRICTIVE COVENANTS; RESPONSIBILITY FOR OBTAINING ALL APPROVALS WILL BE BORNE BY THE CONTRACTOR.

REFER TO STRUCTURAL ENGINEER'S SPECIFICATION AND DRAWINGS FOR ALL STRUCTURAL WORKS.

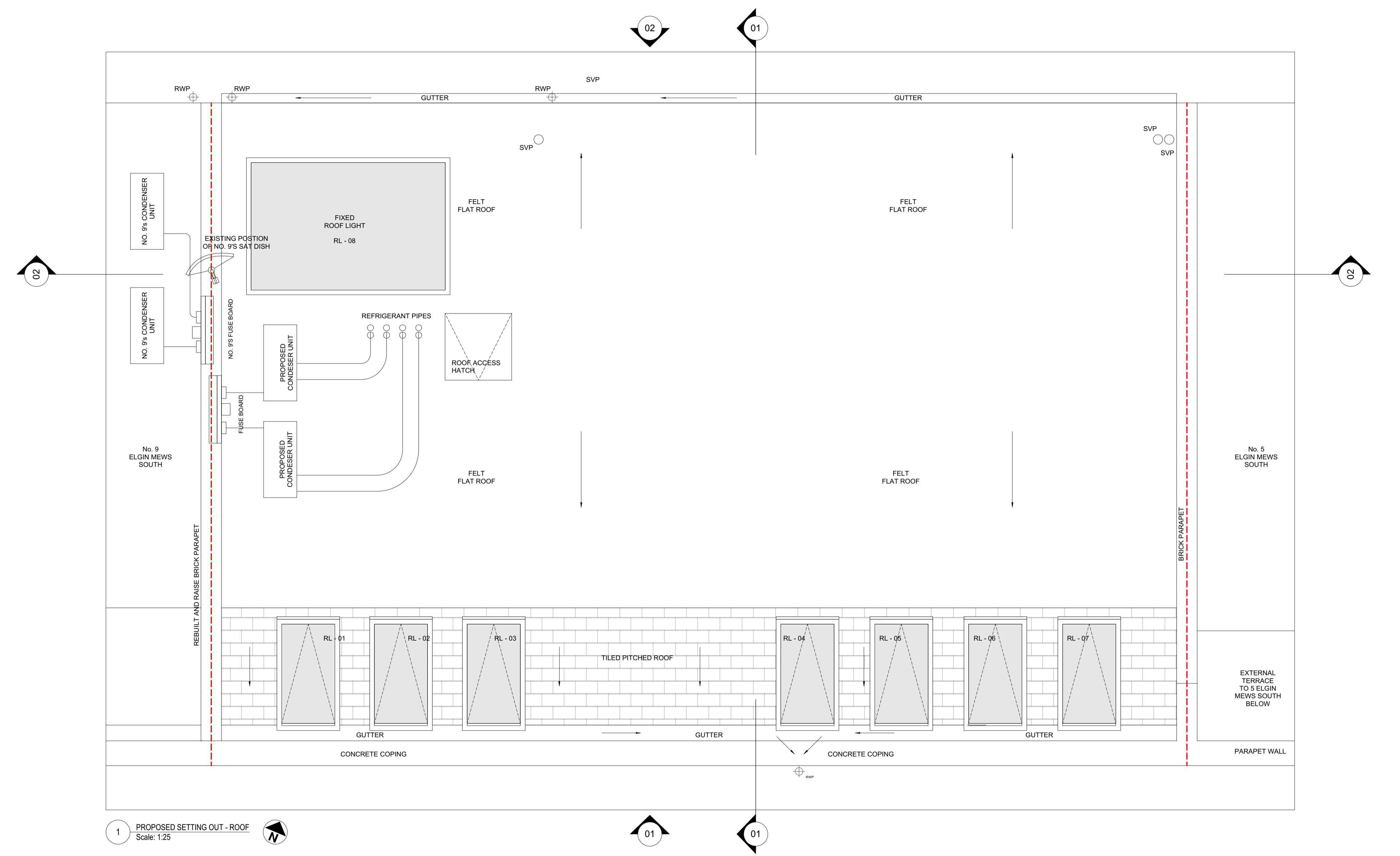
ALL TEMPORARY STRUCTURAL AND WEATHERPROOFING WORKS ARE THE RESPONSIBILITY OF THE CONTRACTOR.

B@XAMI.CO.UK
TEL: +44 (0)20 3907 6874

© 2019 XAMI

| No. | Date | Issue Notes |
|-----|----------------|-------------------------------------|
| A | 11 / 03 / 2020 | CHANGE TO OVERALL DESIGN OF JOINERY |

| STATUS: FOR CONSTRUCTION | |
|--------------------------|----------------------------|
| Project Title | 7 ELGIN MEWS SOUTH |
| Sheet Title | PROPOSED SETTING OUT - L02 |
| Project ID | 1908 |
| Scale | 1:25@A1 |
| Sheet No. | (00)14 |
| Date | 11 / 03 / 2020 |



| ELECTRICAL & LIGHTING KEY | | | | | | | | | | | |
|------------------------------|--------|--------------------------------------|-------------------------|------------------------------|--------------------------|-------------------------------------|---------------------------|--------------|--|--|--|
| COMMUNICATIONS / DATA SOCKET | DATA | SWITCHED FUSED SPUR | DOOR RELEASE / INTERCOM | DOOR | EXTERNAL SIREN | SMOKE / HEAT DETECTOR | LOW VOLTAGE DOWNLIGHTER | LIGHT SWITCH | | | |
| BT PHONE LINE CONNECTION | BT | SINGLE SWITCHED SOCKET | DOORBELL PUSH | INTERNAL SIREN | SMOKE DETECTOR | LOW VOLTAGE DIRECTIONAL DOWNLIGHTER | PUSHTURN DIMMER SWITCH | | | | |
| SKY PLUS TV CONNECTION | SKY | TWIN SWITCHED SOCKET | DOORBELL SOUNDER | MAIN SECURITY ALARM PANEL | HEAT DETECTOR | PENDANT LAMP | PULL CORD | | | | |
| VIRGIN TV CONNECTION | VIRGIN | TWIN SWITCHED SOCKET WITH USB | | SECURITY ALARM KEYPAD | CARBON MONOXIDE DETECTOR | STRIPLIGHT | ROOFLIGHT OPENER | | | | |
| TV AERIAL | TV | SHAVER SOCKET | | SECURITY ALARM MOTION SENSOR | BREAK GLASS ALARM | WALL LAMP | THERMOSTAT (W + WIRELESS) | | | | |
| | | TWIN SWITCHED OUTDOOR SOCKET - IP 66 | | SECURITY ALARM DOOR SENSOR | | EMERGENCY LIGHTING | EXTRACTOR FAN | | | | |
| | | | | | | ILLUMINATED FIRE EXIT SIGN | SPEAKER | | | | |

DRAWING NOTES
 XAMI LTD SHALL HAVE NO RESPONSIBILITY FOR ANY USE MADE OF THIS DOCUMENT OTHER THAN THAT FOR WHICH IT WAS PREPARED AND ISSUED. ALL DIMENSIONS SHOULD BE CHECKED ON SITE. DO NOT SCALE FROM THIS DRAWING. ANY DRAWING ERRORS OR DIVERGENCES SHOULD BE BROUGHT TO THE ATTENTION OF XAMI LTD IMMEDIATELY.
 ALL DETAILS INCLUDING EARTH CONDITIONS, STRUCTURE, GLAZING, GROUND AND OVERHEAD WATERPROOFING, M&E SERVICES AND FINISHES ARE SHOWN FOR INDICATIVE PURPOSES ONLY AND ARE SUBJECT TO CONTRACTOR'S OWN SURVEY, DESIGN AND STATUTORY APPROVALS (INCLUDING BUT NOT LIMITED TO BUILDING CONTROL, PARTY WALLS AND WATER BOARD) PRIOR TO COMMENCING WORK. NO CHECKS HAVE BEEN MADE ON RESTRICTIVE COVENANTS; RESPONSIBILITY FOR OBTAINING ALL APPROVALS WILL BE BORNE BY THE CONTRACTOR.
 REFER TO STRUCTURAL ENGINEER'S SPECIFICATION AND DRAWINGS FOR ALL STRUCTURAL WORKS.
 ALL TEMPORARY STRUCTURAL AND WEATHERPROOFING WORKS ARE THE RESPONSIBILITY OF THE CONTRACTOR.

B@XAMI.CO.UK
 TEL: +44 (0)20 3907 6874
 © 2019 XAMI

| No. | Date | Issue Notes |
|-----|----------|---------------------|
| A | 15/10/19 | ALTERATIONS TO ROOF |

| STATUS: FOR CONSTRUCTION | |
|--------------------------|-----------------------------|
| Project Title | 7 ELGIN MEWS SOUTH |
| Sheet Title | PROPOSED SETTING OUT - ROOF |
| Project ID | 1908 |
| Scale | 1:25@A1 |
| Sheet No. | (00)15 |
| Date | 10 / 11 / 2019 |